

NSW Seasonal Conditions Summary - December 2013

Highlights

- Near normal rainfall is likely over the next 3 months, with lower rainfall probabilities for eastern NSW, especially the north east.
- Warmer daytime & overnight temperatures are likely in the northern, central & eastern areas of NSW.
- November was close to normal in daytime temperature, & rainfall was above average along the coast but below average across the west & central west.
- Over the last 3 months, rainfall has been below average over most of western & central NSW.
- Pasture growth during November was low across most of western, north western & central western NSW, but average in the east. Modelled topsoil moisture was low across western & central NSW, but improved on the coast. Subsoil moisture declined slightly.
- Stock condition & pasture production will depend upon follow up rainfall over the coming months. Considerable resources are available to assist in management at <http://www.dpi.nsw.gov.au/agriculture/emergency/drought/managing>

Summary

Over December to February near normal rainfall conditions are likely across most of western and central NSW, with a slightly reduced likelihood across the tablelands and south and central coast. Lower than normal rainfall is likely in the north east of NSW. December and January are likely to be drier than normal.

Warmer than normal daytime and overnight temperatures are likely over the December to February period, particularly across the northern and central areas of NSW. Near normal temperatures are likely in the south west. December is likely to be warmer than normal, except overnight in the south west. January is also likely to be warmer than normal.

The ENSO climatic indicators are currently neutral, and the ENSO outlooks suggest a high probability for neutral conditions to continue over summer.

Over November, 53% of NSW received below average rainfall, with western and central NSW receiving less than 60% of average. The east

received 80-200% of average, with the highest falls along the coast. Daytime temperatures were near average, and overnight temperatures slightly cooler than average.

Most of the Western and Central West LLS districts received below to well below average November rainfall, relative to historical records. Rainfall across most of these districts was restricted to 10 mm or less. The majority of the coast and eastern fall areas received well above average to extremely high relative rainfall (19% of NSW), with falls of between 100-300 mm or more.

In relative terms, quarterly rainfall was below average across 71% of NSW, covering most of the western and central areas. It was extremely low across an area extending from Tibooburra to the south and south east towards Hay and Deniliquin. Quarterly relative rainfall was average or above over 29% of NSW.

Relative rainfall for the last six months was below average across the north west and far north west, but average over the remainder of NSW.

Modelled topsoil moisture was low over 89% of NSW, particularly across the western and central areas, but improved over the coastal LLS districts. Modelled subsoil moisture also declined slightly during the month, with an additional 8% of NSW in the low category. Higher than normal rainfall is needed to replenish depleted profiles.

Modelled pasture growth for November was limited across most of the Western and Central West LLS districts. Relative to historical records, it was well below average in these areas. Biomass levels were similar to October, were low in the north of the Western LLS district and across the North West and Central West LLS districts but improved along the coast. Relative to historical records, biomass was average across the coast and most of the west.

Quarterly relative pasture growth was low over much of the Western, North West, Northern Tablelands and Central Tablelands LLS districts.

The seasonal outlooks presented in this report are obtained from the Australian Bureau of Meteorology & other sources. These outlooks are general statements about the likelihood (chance) of (for example) exceeding the median rainfall or minimum or maximum temperatures. Such probability outlooks should not be used as categorical or definitive forecasts, but should be regarded as tools to assist in risk management & decision making. Changes in seasonal outlooks may have occurred since this report was released. Outlook information was up to date as at 6th December 2013.

Figure 1: Relative monthly topsoil moisture

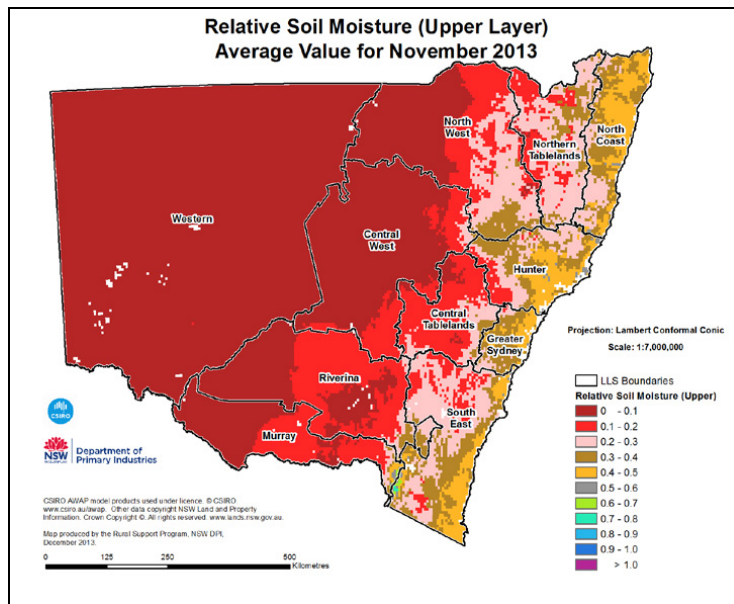
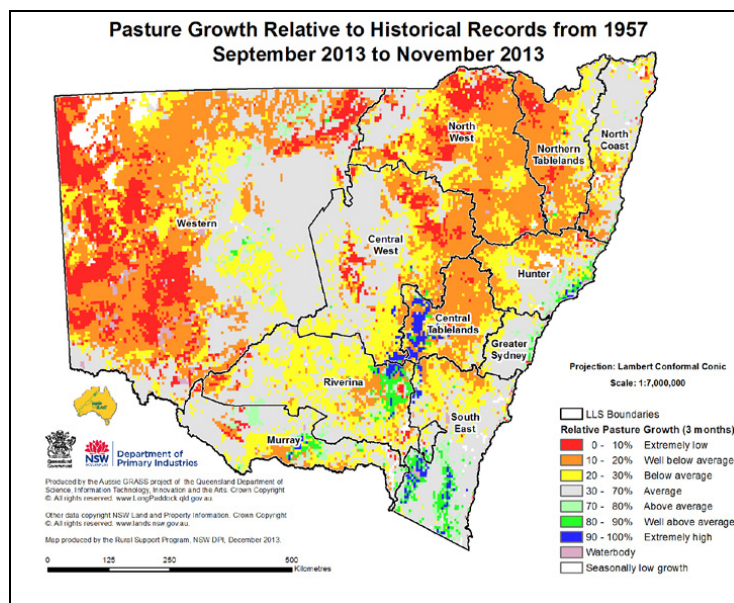


Figure 2: Relative quarterly pasture growth



More information

For more information, contact the NSW Department of Primary Industries on 02 6391 3100.

Acknowledgments

Information used in this report was sourced from the Bureau of Meteorology, CSIRO, Queensland Department of Science, Information Technology, Innovation and the Arts, NSW Livestock Health and Pest Authorities, Catchment Management Authorities and NSW Department of Primary Industries.

Warning

Recognising that some of the information in this document is provided by third parties, the State of New South Wales, the author and the publisher take no responsibility for the accuracy, currency, reliability and correctness of any information included in the document provided by third parties.

© State of New South Wales through the Department of Trade and Investment, Regional Infrastructure and Services, 2013. You may copy, distribute and otherwise freely deal with this publication for any purpose, provided that you attribute the NSW Department of Primary Industries as the owner.

Disclaimer: The information contained in this publication is based on knowledge and understanding at the time of writing (December 2013). However, because of advances in knowledge, users are reminded of the need to ensure that information upon which they rely is up to date and to check currency of the information with the appropriate officer of the Department of Primary Industries or the user's independent adviser.

Published by the Department of Primary Industries.

ISSN 2202-1795 (Online)

INT13/102377