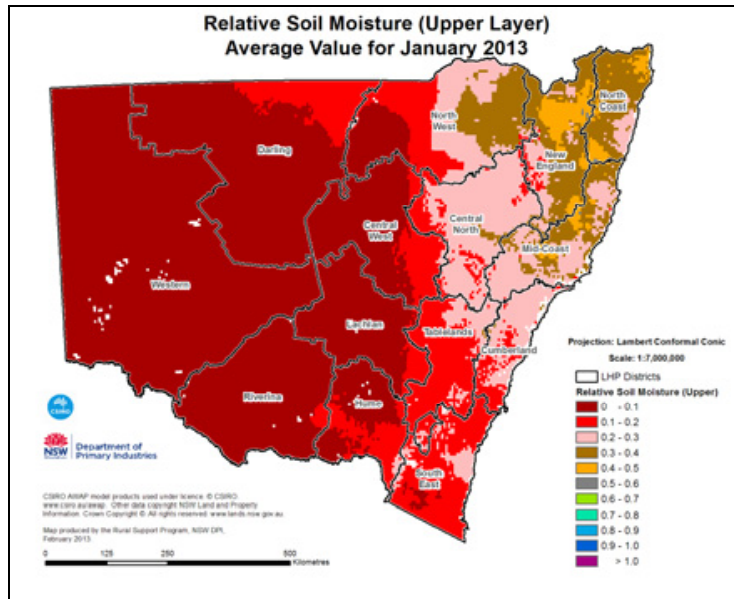




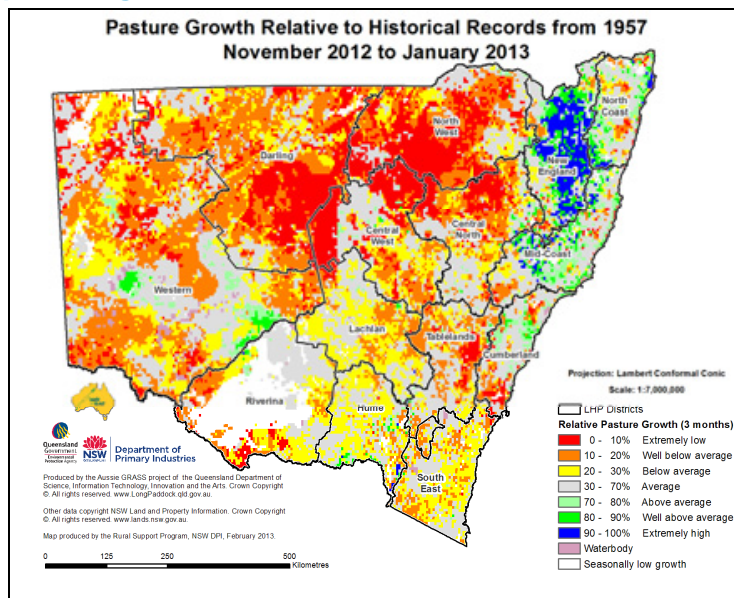
NSW Seasonal Conditions Summary - February 2013

- During January, rainfall was limited over much of the Western, Darling and Riverina LHPA districts, and sections of Lachlan, Central West and North West LHPA districts.
- Extremely heavy falls, associated with the effects of ex-tropical cyclone Oswald, occurred in the north east. The North Coast and Mid-Coast LHPA districts were worst affected and suffered heavy flooding.
- Heavy storm rainfall also occurred over other area in the east and centre of the State, including the North West, New England, Central North, Cumberland and South East and parts of the Tablelands LHPA districts.
- Relative to historical records, rainfall for January was above average to extremely high across most of the coast, northern tablelands and north west slopes. However, the western and central areas of the State generally experienced extremely low to below average rainfall.
- Relative rainfall across all but the north east of NSW has remained below average to well below average for the last 9 months. Most of the Western, Darling, Central West, and Lachlan LHPA districts, the western section of North West and areas of the Riverina LHPA districts have suffered serious to severe rainfall deficiencies.
- With the exception of the South East, North Coast and parts of the Mid Coast LHPA districts, maximum temperatures ranged from 2-6 degrees above average during the month. In the north western and south-central areas of the State, maximum temperatures ranged from 4-6 degrees above average. These temperatures exacerbated the effects of low rainfall in many areas.
- Modelled topsoil moisture remains very low across western and central areas of the State. The heavy rainfall in the north east improved relative topsoil moisture to near average levels in these areas.
- Despite this, modelled subsoil moisture was static at near average levels, or continued to decline slightly from those of December.
- Pasture growth models indicate that for January, extremely low to below average relative growth occurred in the western and central areas of the State. Low modelled growth occurred over areas of the Darling, Western, Central West, Lachlan, Riverina and Hume LHPA districts.
- Average to well above average growth occurred across the New England, North Coast, Central North, Mid-Coast and Cumberland LHPA districts, and parts of the North West, Tablelands and South East LHPA districts. Pasture growth data was not available for large areas of the Western and Riverina LHPA districts.
- Over the last three to six months, relative pasture growth has been below average to extremely low across most of the State.
- Modelled relative standing dry matter levels across central and south eastern NSW were generally below average to extremely low. Dry matter levels were average to well above average across the far west areas of the Western and Darling LHPA districts, and in the north east of the State.
- Levels in water storages remained moderately high, with the average effective capacity being 70%. Most general security allocations are unchanged from December. Allocations are at 100% or more, except for the Lachlan, Belubula, Macquarie, Namoi, Peel and Brogo river valleys.
- The probability of exceeding the median rainfall over the three month period to the end of April is near even for most of NSW, grading to slightly lower than even across north east and far south west NSW. Outlook confidence is however generally low.
- There is a decreased probability of higher than normal daytime temperatures over the three month period to the end of April in the south and south western areas of the State. For the rest of the State, the probability is near even.
- Minimum temperatures over the next three months are likely to be lower than normal to normal across State. Cooler than average nights are likely in the south and south east.

Relative monthly topsoil moisture



Relative quarterly pasture growth



More information

For more information, contact the NSW Department of Primary Industries.

Acknowledgments

Information used in this report was sourced from the Bureau of Meteorology, CSIRO, the Queensland Department of Science, Information Technology, Innovation and the Arts and the NSW Department of Primary Industries.

Warning

Recognising that some of the information in this document is provided by third parties, the State of New South Wales, the author and the publisher take no responsibility for the accuracy, currency, reliability and correctness of any information included in the document provided by third parties.

© State of New South Wales through the Department of Trade and Investment, Regional Infrastructure and Services, 2013. You may copy, distribute and otherwise freely deal with this publication for any purpose, provided that you attribute the NSW Department of Primary Industries as the owner.

Disclaimer: The information contained in this publication is based on knowledge and understanding at the time of writing (February 2013). However, because of advances in knowledge, users are reminded of the need to ensure that information upon which they rely is up to date and to check currency of the information with the appropriate officer of the Department of Primary Industries or the user's independent adviser.

Published by the Department of Primary Industries.