

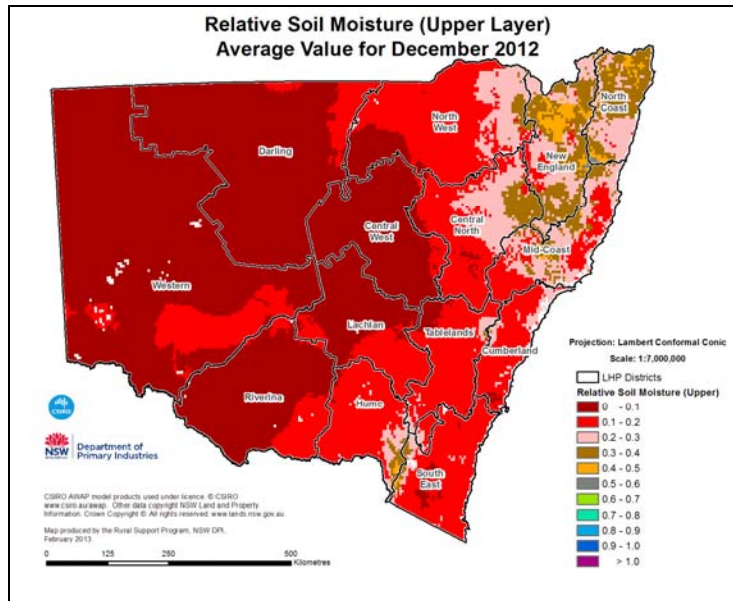
NSW Seasonal Conditions Summary

15 January 2013

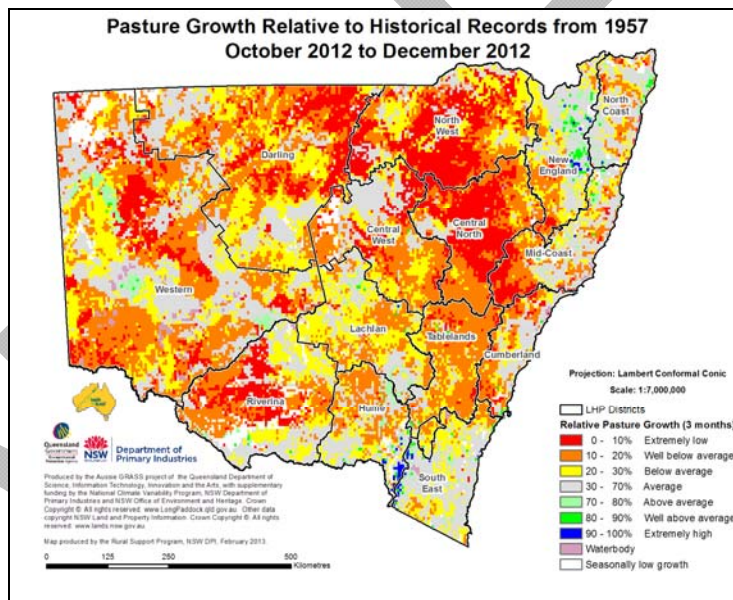
- During December, rainfall was limited over much of the Darling and Central West LHPA districts, and sections of Lachlan, Western, Cumberland and the South East LHPA districts.
- With the exception of the South East, Mid Coast and parts of the New England and Cumberland LHPA districts, maximum temperatures were generally one to three degrees above average during the month.
- Relative to historical records, rainfall across NSW has remained below average to well below average for the last 9 months.
- Modelled topsoil moisture remains very low across the State, with some improvement from recent rainfall in the north east. Declines have occurred in the South East, Central West, Lachlan, Western, Darling and Riverina LHPA districts since November.
- Rainfall during the month had little effect on modelled subsoil moisture levels. Subsoil moisture continues to decline, with the greatest reductions along the coast, slopes and tablelands.
- Pasture growth models indicate that below average relative growth occurred during December over much of the State. The lowest potential growth occurred over areas of the Central West and the South East LHPA districts. Average to above average growth occurred in the New England, parts of the North Coast, Mid Coast and Tablelands LHPA districts. Pasture growth data was not available for large areas of the far west.
- Over the last three months, relative pasture growth has been below average to extremely low across most of the State.
- Modelled relative standing dry matter levels across central and eastern NSW were generally below average to extremely low. Dry matter levels were average to well above average across the far west areas of the Western and Darling LHPA districts, and in areas of the New England LHPA district.
- Levels in water storages remained moderately high, with the average effective capacity being 77% (although information was not available for some storages). General security allocations are unchanged from November. Across most river valleys allocations are at 100%, except for the Lachlan, Belubula, Macquarie, Namoi and Brogo river valleys.
- Rainfall over the three month period to the end of March is predicted to be near normal across much of NSW.
- There is an increased probability of higher than normal daytime temperatures over the three month period to the end of March in the northern and central areas of the State.
- Minimum temperatures over the next three months are likely to be near normal in the northern and central areas of the State. Cooler than average nights are likely in the south.
- Given climatic, soil and pasture observations in the Western and Darling LHPA regions, livestock producers may need to consider options such as:-
 - Selling some or all stock
 - Production feeding
 - Maintenance feeding
 - Agistment
 - Trading in livestock

NB: Information regarding these options are available at
http://www.dpi.nsw.gov.au/__data/assets/pdf_file/0005/90329/managing-drought-full-version.pdf

Relative topsoil moisture



Relative pasture growth



More information

This report is a summary. For more information and access to the full report please go to <http://www.dpi.nsw.gov.au/info/seasonalconditions>

Acknowledgments

Information used in this report was sourced from the Bureau of Meteorology, CSIRO, the Queensland Department of Science, Information Technology, Innovation and the Arts and the NSW Department of Primary Industries.

Warning

Recognising that some of the information in this document is provided by third parties, the State of New South Wales, the author and the publisher take no responsibility for the accuracy, currency, reliability and correctness of any information included in the document provided by third parties.

© State of New South Wales through the Department of Trade and Investment, Regional Infrastructure and Services, 2013. You may copy, distribute and otherwise freely deal with this publication for any purpose, provided that you attribute the NSW Department of Primary Industries as the owner.

Disclaimer: The information contained in this publication is based on knowledge and understanding at the time of writing (February 2013). However, because of advances in knowledge, users are reminded of the need to ensure that information upon which they rely is up to date and to check currency of the information with the appropriate officer of the Department of Primary Industries or the user's independent adviser.

Published by the Department of Primary Industries.