

## NSW Seasonal Conditions Summary - June 2013

### Highlights

- Wetter conditions expected across the state, with higher probabilities in central and eastern NSW.
- Cooler daytime temperatures & warmer night time temperatures likely.
- Widespread light rainfall & isolated heavier falls improved conditions during May.
- Yearly relative rainfall well below average in western & central NSW, with severe deficiencies in many areas.
- Monthly relative pasture growth was near average, with isolated pockets in Central and Riverina regions at lower levels.
- Modelled topsoil moisture levels have improved in most areas. Subsoil moisture generally static.
- Whilst general conditions have improved recovery will be dependent upon follow up rainfall in the coming months. As such it is important that farmers have a clear plan & an understanding of their options. Considerable resources are available to assist in management.

Details at

<http://www.dpi.nsw.gov.au/agriculture/emergency/drought/managing>

### 1. Summary

The outlook for NSW between June and August indicates that wetter conditions are likely across the state with higher probabilities of above median rainfall in central and eastern NSW.

Cooler than normal daytime temperatures are likely over this period, with lowest temperatures predicted in the central Western and northern Lachlan LHPA districts. Warmer than normal overnight temperatures are likely for southern and central NSW, with average overnight temperatures predicted for north western NSW.

Conditions deteriorated during the month for parts of the South East, Tablelands, Lachlan, Central West, Central North and New England LHPA districts, with significant rainfall deficiencies occurring. The balance of the State received average rainfall. Severe long term (12 month) rainfall deficiencies are evident in most regions west of the Great Dividing Range.

Reports from LHPA Rangers indicate that rainfall during May and early June has brought some

relief. Hand feeding is common and there are widespread concerns over availability of stock water. Recent rainfall should assist winter cropping programs particularly for those that have dry sown. Recent rainfall has enabled pasture to reshoot, however shorter days and frosts are likely to prolong hand feeding in most affected areas. While stock condition is stable this is a result of supplementary feeding. In many areas, stock condition is starting to decline and an increasing number of stock are being sold despite reduced prices.

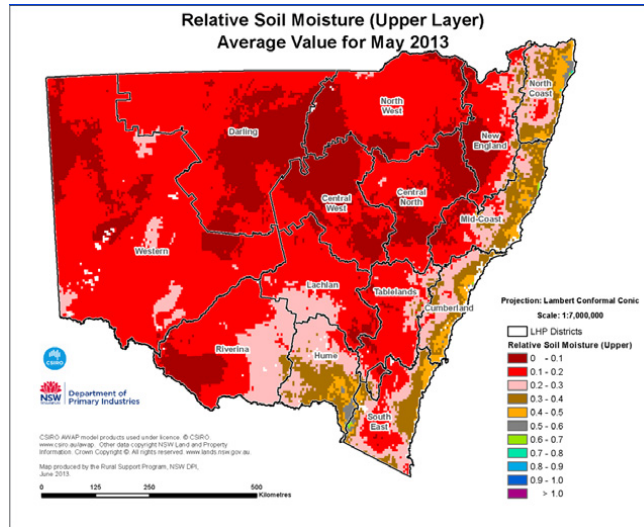
During May widespread light rainfall fell over much of the State, typically in excess of 10mm with more isolated heavier falls of between 25-50mm. Higher falls were received in parts of the Hume (50-200mm), Cumberland (50-200mm), and Mid-Coast (50-300mm) LHPA districts.

Relative to historical records, rainfall for May was average for much of the State apart from a narrow band running north to south through portions of the South East, Tablelands, Lachlan, Central West, Central North and New England regions, which was below to well below average. Relative rainfall for the last six months was well below average or worse for much of central NSW and the southern Riverina.

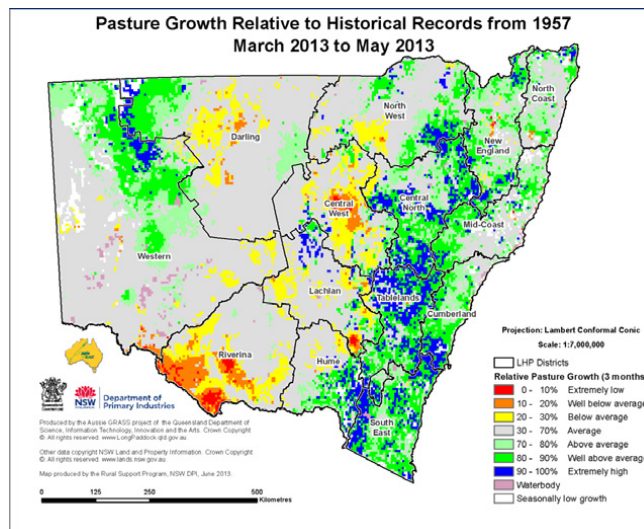
Rainfall during May led to improvements in modelled topsoil moisture across most of NSW. Drier conditions persisted for parts of the Riverina, eastern Darling, northern Central West, northern Central North and eastern New England regions. Modelled subsoil moisture levels remained relatively static with small isolated declines.

Modelled pasture growth during May indicated relatively average growth across much of the State with small areas below average in the southern Riverina, northern Central West, eastern Central North and eastern North West regions. Over the last 12 months, relative growth has been very low. Modelled relative biomass levels across central NSW were variable, with large areas being well below average.

## Relative monthly topsoil moisture



## Relative quarterly pasture growth



## More information

For more information, contact the NSW Department of Primary Industries on 02 6391 3100.

## Acknowledgments

Information used in this report was sourced from the Bureau of Meteorology, CSIRO, the Queensland Department of Science, Information Technology, Innovation and the Arts, NSW Livestock Health and Pest Authorities and the NSW Department of Primary Industries.

## Warning

Recognising that some of the information in this document is provided by third parties, the State of New South Wales, the author and the publisher take no responsibility for the accuracy, currency, reliability and correctness of any information included in the document provided by third parties.

© State of New South Wales through the Department of Trade and Investment, Regional Infrastructure and Services, 2013. You may copy, distribute and otherwise freely deal with this publication for any purpose, provided that you attribute the NSW Department of Primary Industries as the owner.

Disclaimer: The information contained in this publication is based on knowledge and understanding at the time of writing (July 2013). However, because of advances in knowledge, users are reminded of the need to ensure that information upon which they rely is up to date and to check currency of the information with the appropriate officer of the Department of Primary Industries or the user's independent adviser.

Published by the Department of Primary Industries.

ISSN 2202-1795 (Online)

INT13/48671