

## NSW Seasonal Conditions Summary - March 2013

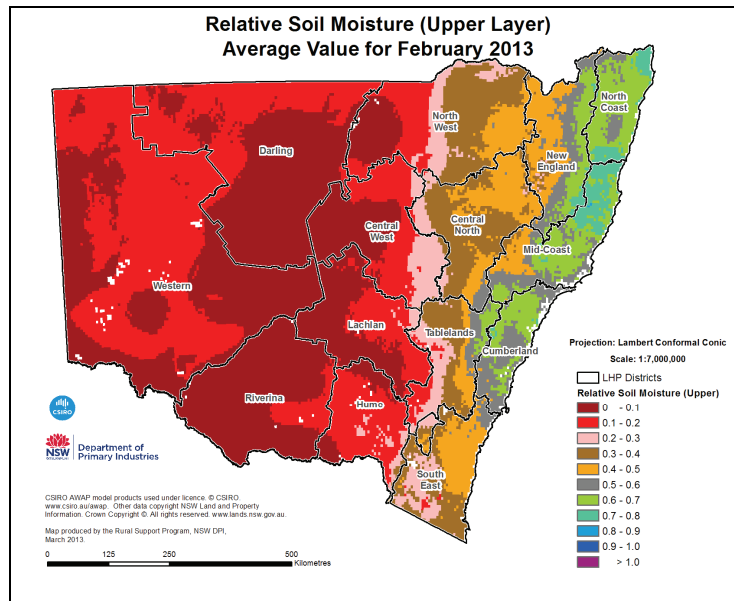
### Highlights

- Wetter conditions possible for central and western NSW, cooler than normal daytime temperatures.
- Average rainfall in central areas, low around Bourke, Brewarrina and Nyngan and above average or higher in the east, south west and west.
- Very high rainfall on the north and mid north coast.
- Dramatic improvements in topsoil moisture along the coast, tablelands and NW slopes.
- Pasture growth average in the west and south, below average in the central west and north west, above average across the tablelands and coast.

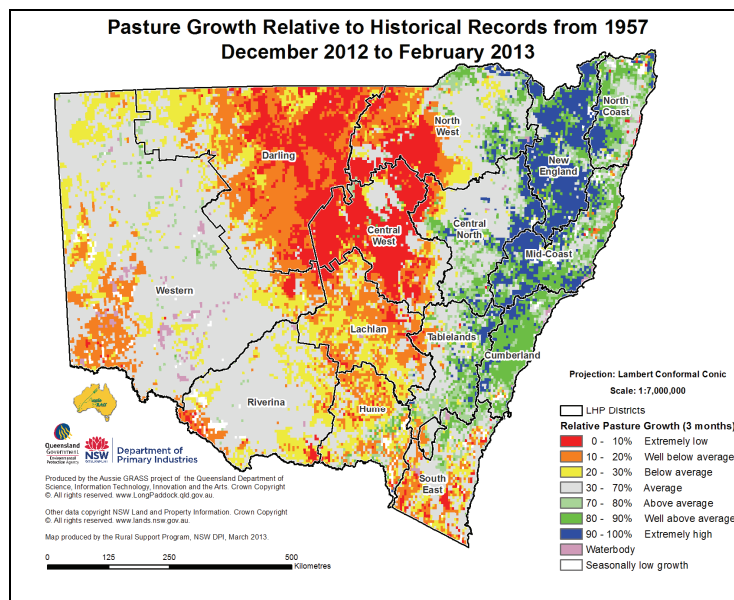
### Summary

- Wetter conditions are possible for central and western NSW between March and May with the chance of exceeding median rainfall being between 55-70%. Probabilities are 50-55% for eastern NSW.
- Cooler than normal daytime temperatures are likely over the three month period to the end of May. Minimum temperatures over the next three months are likely to be warmer than normal in the north to north east, and cooler than normal in the south west.
- During January, rainfall was limited over much of Darling and areas of Central West, Lachlan, North West and Western LHPA districts.
- Storm rainfall caused moderate to heavy rainfall over areas of southern and coastal NSW early in the month and mid month.
- Extremely heavy falls occurred late in the month across areas of the North Coast and Mid-Coast LHPA districts, due to an east coast low, and resulted in more flooding.
- Relative to historical records, rainfall for February was above average to extremely high across most of the coast, the eastern side of the tablelands, the alpine areas and areas of far west NSW and the Riverina. The rest of the State received average relative rainfall, except for the eastern side of Darling LHPA and the western edges of North West and Central West LHPA districts.
- Relative rainfall across all but the north east has remained below average to well below average for the last 9 months. The Central West and areas of surrounding LHPA district suffered serious rainfall deficiency.
- Maximum temperatures were normal to -2 degrees below average during the month across the eastern third of the State, due to heavy cloud cover, and near normal across much of the central and north western areas. In the south western third of the State, maximum temperatures ranged from 1-3 degrees above average.
- Modelled topsoil moisture remains very low across western and western-central areas of the State, but has improved slightly. The heavy rainfall along the north to central coast boosted relative topsoil moisture to average-high levels in these areas, and low-average in along the south coast, tablelands and central to north west slopes. Modelled subsoil moisture also improved across these areas, but was low-moderate in the west.
- Pasture growth models indicate that for February, average relative growth occurred across the Western LHPA district, as well as the western edge of Darling, Riverina and Hume and Lachlan LHPA districts. Pasture growth data was not available for large areas of the Western and Riverina LHPA districts.
- Above average to extremely high relative growth occurred across the coastal and tablelands LHPA districts, as well as Central North and the eastern half of the North West LHPA districts. Relative growth across the east of Darling, western half of North West and Central West LHPA districts was below average to extremely low
- Over the last three months, relative pasture growth has been below average to extremely low across the central areas, and above average or better across the north, mid and central coasts and northern tablelands.
- Modelled relative standing dry matter levels across central and south eastern NSW were generally below average to extremely low. Dry matter levels were average to well above average in the far north west, and across north, mid and central coasts and northern tablelands.

## Relative monthly topsoil moisture



## Relative quarterly pasture growth



## More information

For more information, contact the NSW Department of Primary Industries.

## Acknowledgments

Information used in this report was sourced from the Bureau of Meteorology, CSIRO, the Queensland Department of Science, Information Technology, Innovation and the Arts and the NSW Department of Primary Industries.

## Warning

Recognising that some of the information in this document is provided by third parties, the State of New South Wales, the author and the publisher take no responsibility for the accuracy, currency, reliability and correctness of any information included in the document provided by third parties.

© State of New South Wales through the Department of Trade and Investment, Regional Infrastructure and Services, 2013. You may copy, distribute and otherwise freely deal with this publication for any purpose, provided that you attribute the NSW Department of Primary Industries as the owner.

Disclaimer: The information contained in this publication is based on knowledge and understanding at the time of writing (March 2013). However, because of advances in knowledge, users are reminded of the need to ensure that information upon which they rely is up to date and to check currency of the information with the appropriate officer of the Department of Primary Industries or the user's independent adviser.

Published by the Department of Primary Industries.