

NSW Seasonal Conditions Summary - April 2013

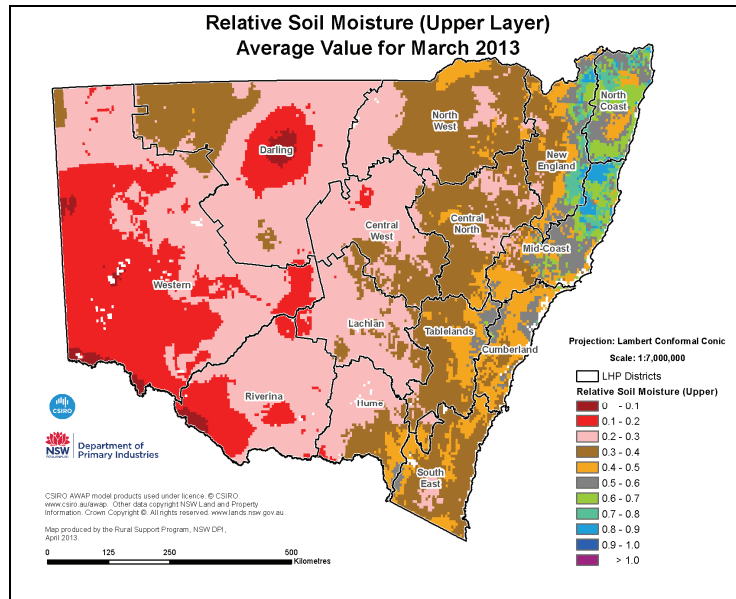
Highlights

- Wetter conditions likely for northern & eastern NSW, normal to drier conditions in the south west.
- Cooler daytime temperatures and warmer night time temperatures likely for the north and north east. Warmer daytime temperatures likely in the south west.
- Relative March rainfall above average for central, north, & north west NSW, below average in the south east.
- Relative March pasture growth generally above average along the tablelands, slopes and coast, and average to above average over the rest of NSW.
- Conditions have continued to deteriorate in parts of the Lachlan, Darling, Central West & Western LHPAs. It is important that businesses have a clear plan and an understanding of their options. Considerable resources are available to assist this process at:
<http://www.dpi.nsw.gov.au/agriculture/emergency/drought/managing>

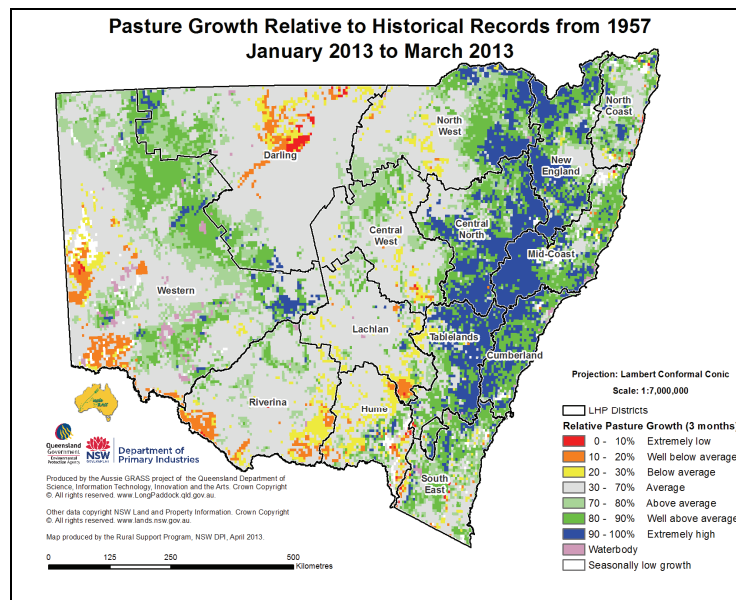
Summary

- Wetter conditions are likely for northern and eastern NSW between April and June with the chance of exceeding median rainfall being between 60-80%. Probabilities are 45-55% for south western and far western NSW, indicating near normal to slightly drier conditions.
- Cooler than normal daytime temperatures are likely over the three month period to the end of June for northern and north eastern NSW. For south western NSW, warmer than normal temperatures are likely. Near normal temperatures are likely in a band running from the far north west of NSW to the far south east.
- Minimum temperatures over the next three months are likely to be warmer than normal in the north to north east, and cooler than normal in the south west.
- A cold front early in the month resulted in widespread heavy rain across northern and eastern NSW, causing minor to moderate flooding. Thunderstorm activity resulted in follow up falls of rain across central NSW mid to late in the month, and also in the south east and northern NSW.
- During March, rainfall was limited over much of the Western and parts of the Riverina and South East LHPA districts, and around Bourke and Brewarrina.
- Relative to historical records, rainfall for March was above average to extremely high across much of the far north west, north west and central NSW and the mid north coast. The rest of the State received average relative rainfall, with the exception of the far south coast and Monaro, which was below average to extremely low in relative rainfall.
- For the last three months, relative rainfall has been above average to extremely high for the north east of the State, much of the tablelands and the central to north coast. Areas of below average relative rainfall occurred between Enngonia, Bourke, Brewarrina, Nymagee, Nyngan, Tottenham, and Lake Cargelligo, around Young, in areas of the Riverina and along the Murray in the far south west. Relative rainfall across the rest of the State was average.
- Maximum temperatures over March were slightly cooler in the north east and far north west, and slightly warmer in the south west of the State. Minimum temperatures were slightly lower than normal in the central tablelands and far north west, and slightly warmer than normal in the far north east and far south west.
- Pasture growth models indicate that for March, relative growth was patchy, but generally above average to extremely high across most of the State. The tablelands and upper slopes had the highest relative growth, and showed a similar pattern for the three months to March. Pasture growth data was not available for large areas of the Western and part of the Riverina LHPA districts.
- Modelled relative standing dry matter levels across central NSW ranged from average to well below average, with above average or better growth across the tablelands, coast and slopes, and in far north western NSW.
- Modelled topsoil moisture was very low in the far west, low across the central areas and moderate to high along the coast. Subsoil moisture increased along the central to north coast and the northern tablelands and remained static over the rest of NSW.

Relative monthly topsoil moisture



Relative quarterly pasture growth



More information

For more information, contact the NSW Department of Primary Industries.

Acknowledgments

Information used in this report was sourced from the Bureau of Meteorology, CSIRO, the Queensland Department of Science, Information Technology, Innovation and the Arts, NSW Livestock Health and Pest Authorities and the NSW Department of Primary Industries.

Warning

Recognising that some of the information in this document is provided by third parties, the State of New South Wales, the author and the publisher take no responsibility for the accuracy, currency, reliability and correctness of any information included in the document provided by third parties.

© State of New South Wales through the Department of Trade and Investment, Regional Infrastructure and Services, 2013. You may copy, distribute and otherwise freely deal with this publication for any purpose, provided that you attribute the NSW Department of Primary Industries as the owner.

Disclaimer: The information contained in this publication is based on knowledge and understanding at the time of writing (April 2013). However, because of advances in knowledge, users are reminded of the need to ensure that information upon which they rely is up to date and to check currency of the information with the appropriate officer of the Department of Primary Industries or the user's independent adviser.

Published by the Department of Primary Industries.

INT13/30534